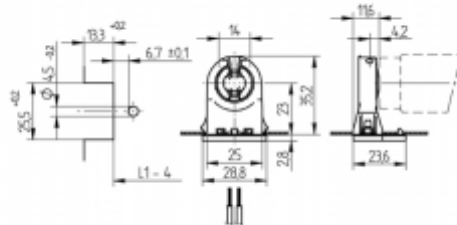


Lampholders and starter holders

26.290.1011

G13 Push through lampholders



colour	pkg.	wt.	part no.
white	500	6 g	26.290.1011.50

Lamp centre: 23 mm  
 Push fixing  
 Housing: PC  
 Rotor: PBT

L1-4: Recommended dimension - The distance between the cut-outs and the tolerance should be governed by the dimensions of the respective lamps and luminaires.

- For cut-outs open at the rear or enclosed cut-outs with 4.5 mm dia. locating hole
- A pair of lampholders provides a lamp length tolerance compensation of 3 mm

T 130	Tm110	U out 500 V							18 AWG 0.5 - 1.0 mm <sup>2</sup>		0.4 - 2.0	
-------	-------	----------------	--	--	--	--	--	--	-------------------------------------	--	-----------	--