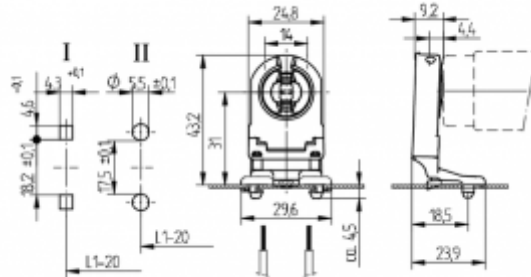


Lampholders and starter holders

26.307.1030

G13 Push in lampholders



L1-20: Recommended dimension - The distance between the cut-outs and the tolerance should be governed by the dimensions of the respective lamps and luminaires.

colour	pkg.	wt.	part no.
white	500	8 g	26.307.1030.50

Approval: additional cULus (660W /600V)

Wiring: through the body

Lamp centre: 31 mm

Snap in pins for cut-outs  $\varnothing$  5.5 or 4.3 x 4.6 mm

Housing: PC

Rotor: PBT

- Snap in pins for IP 40
- A pair of lampholders provides a lamp length tolerance compensation of 3 mm

T 130	Tm110	U out 500 V							
							18 AWG 0.5 -1.0 mm <sup>2</sup>	0.5 - 1.1	